

Billion Electric Co., Ltd.
**Smart Grid, Smart Home, Smart
Lighting Solutions**

Billion Global Marketing
November, 2012

BILLION[®]

Company Quick Facts

| | |
|-----------------------------|--|
| Establishment | 1973 |
| Chairman / CEO | Tim Chen |
| Headquarters | Taipei, Taiwan |
| Capital | USD 31 Million |
| Employees | 1,000+ |
| Initial Public Offer | Taiex #3027 since Jan. 19, 2000 |



Taipei, Taiwan



Hsinchu, Taiwan



China



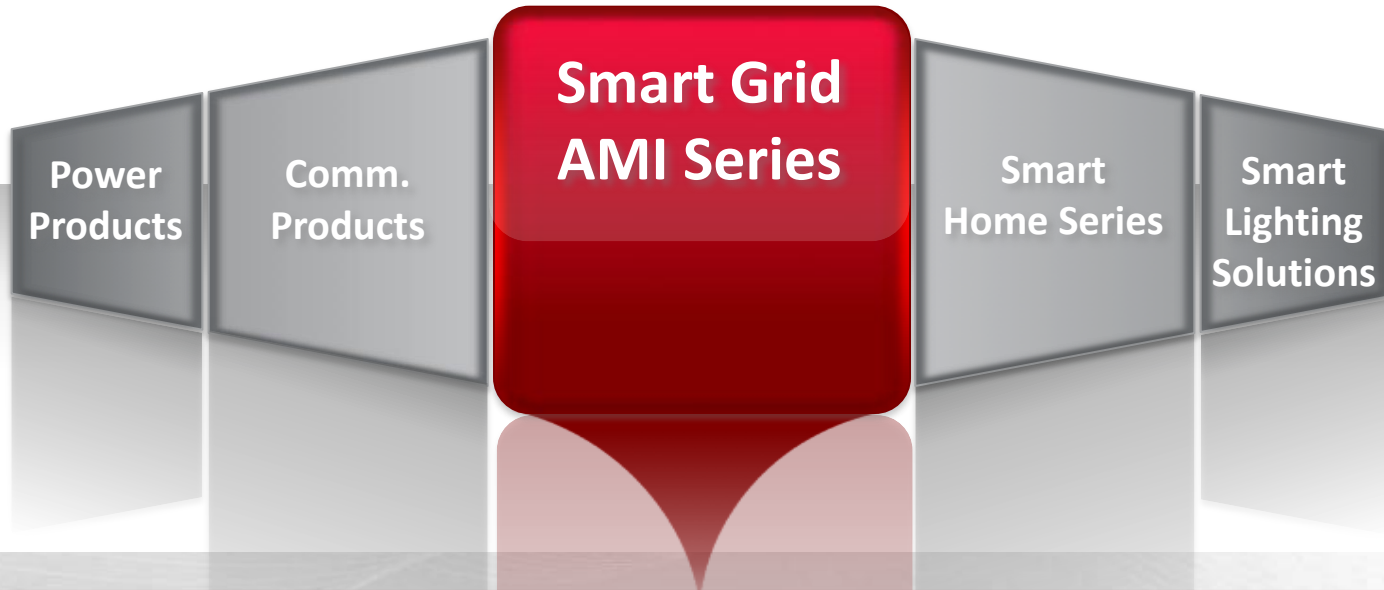
USA



Billion Worldwide



▶ Smart Grid AMI Series



**PLC AMI
Medium-
Voltage
Head End**



**PLC AMI
Medium-
Voltage
Repeater**



**PLC AMI
Low-Voltage
Concentrator**



**PLC AMI
Low-
Voltage
Repeater**



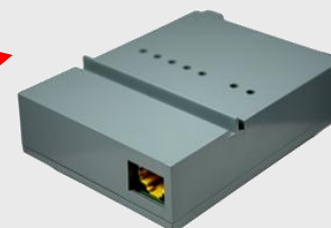
**PLC AMI
End Point**



**PLC AMI
Module**

▶ **Taipower AMI Project**

DCU (Data Concentrator Unit)



Billion SG5010 R2

DCU BPLC Module

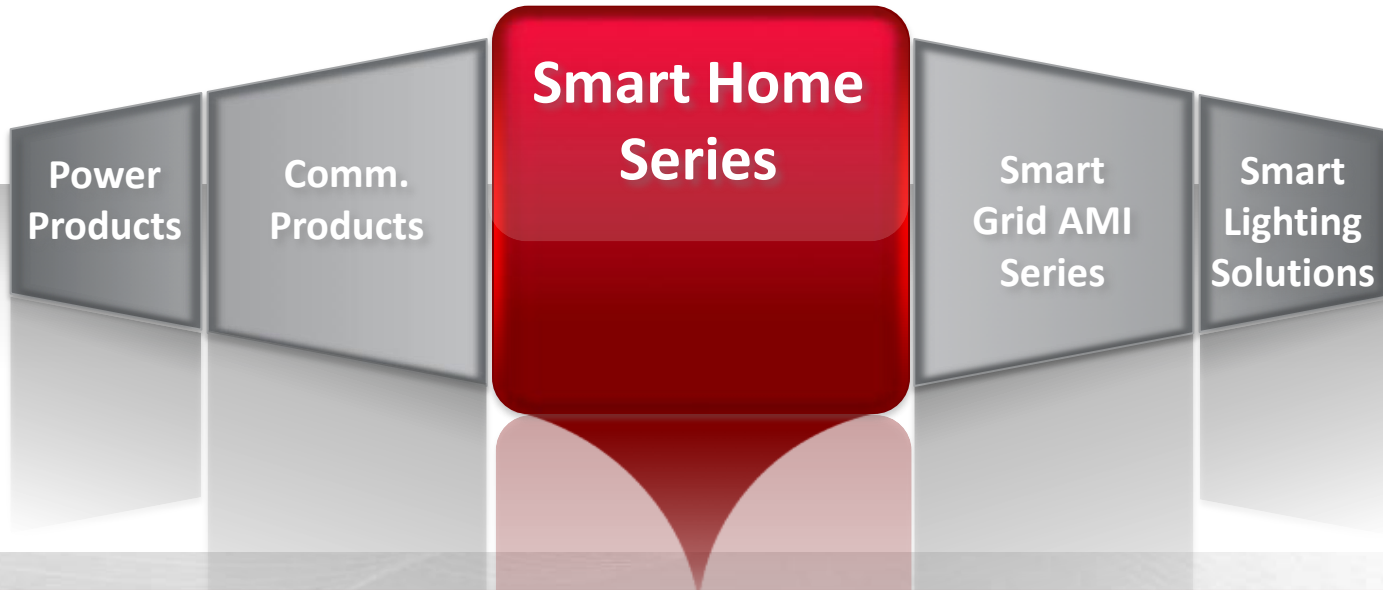
Smart Meter



Billion SG5000

AMI PLC Module

▶ Smart Home Series



Smart Switch



Smart Energy PLC Adaptor



Smart Energy Gateway

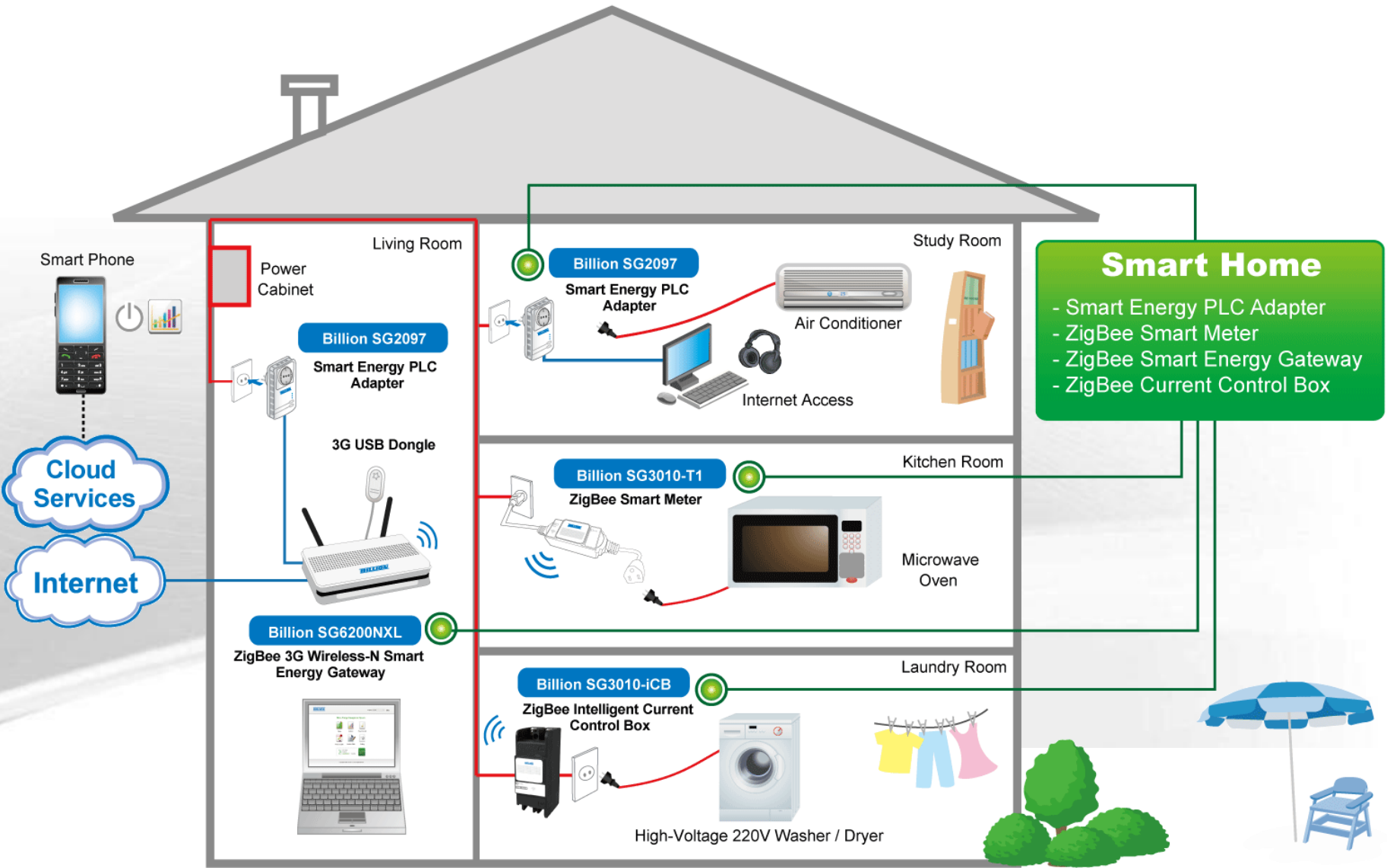


ZigBee Smart Meter

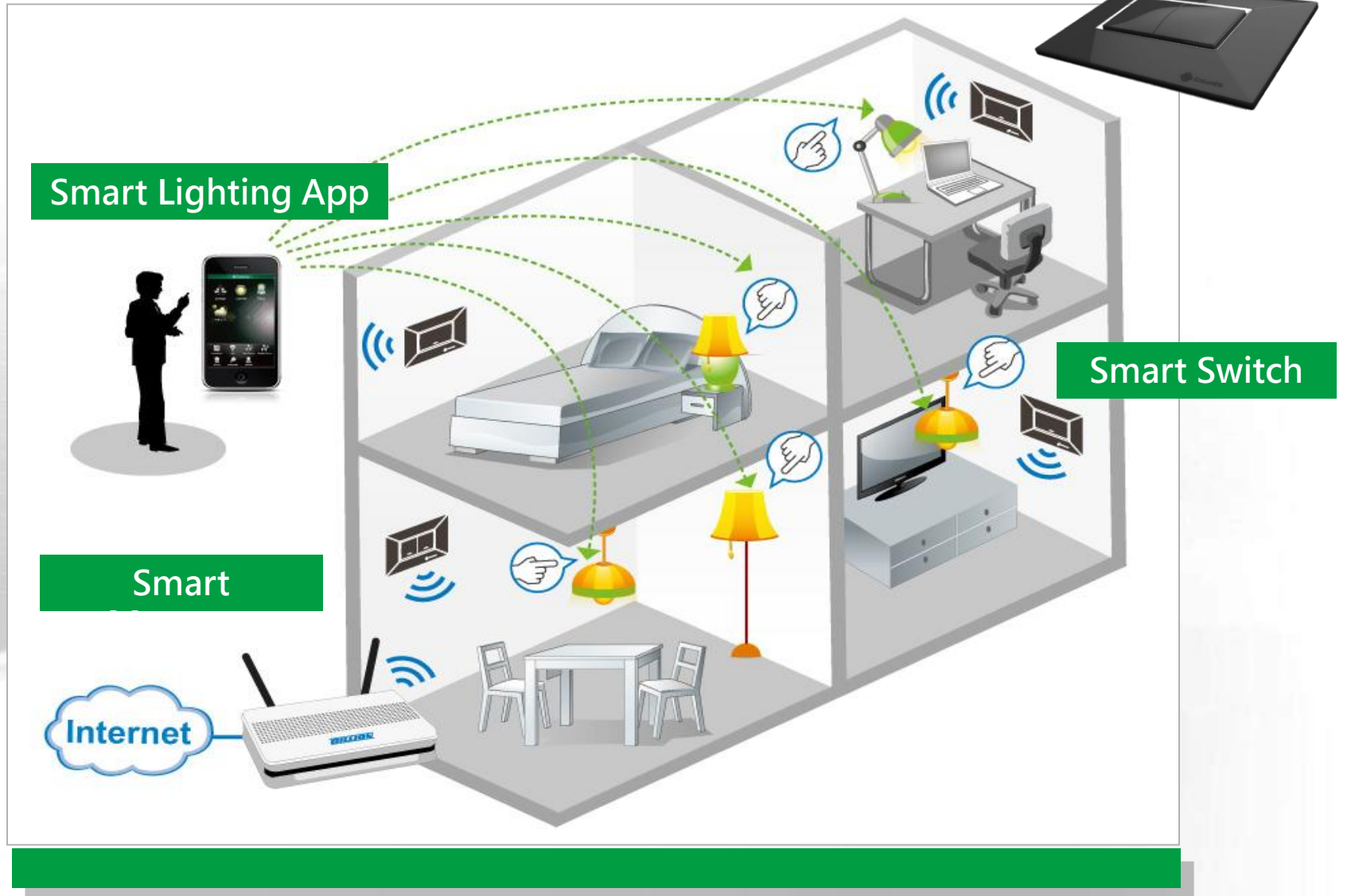


Intelligent ZigBee Current Control Box

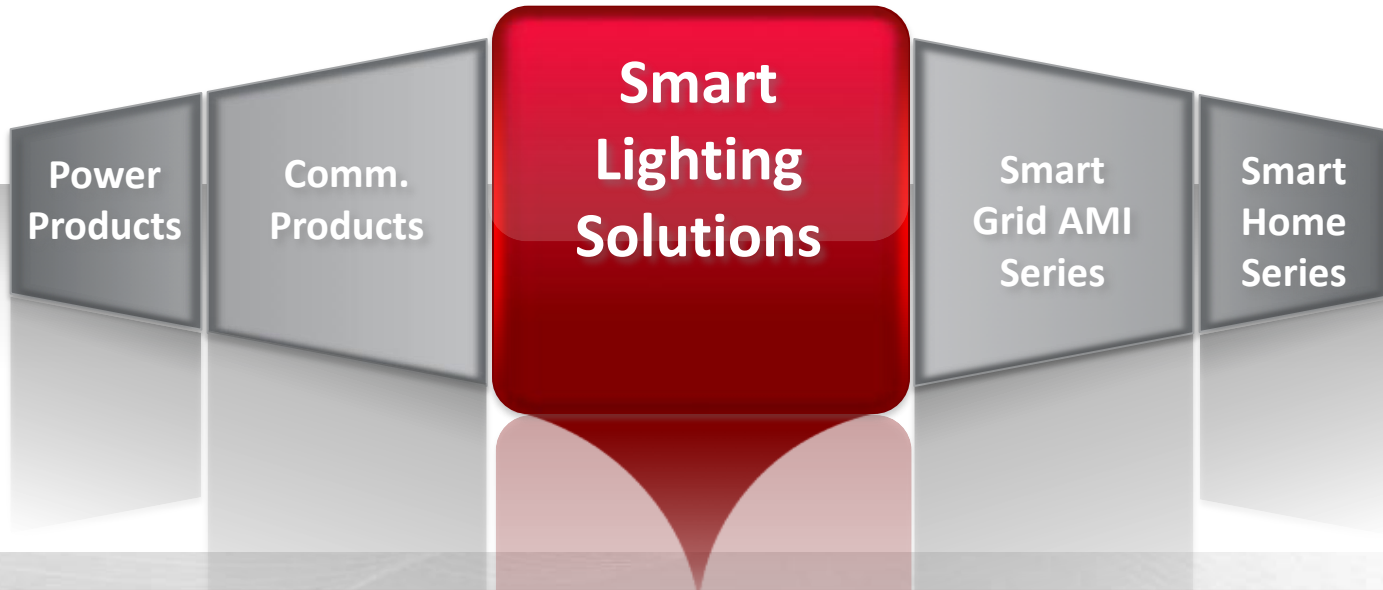
Smart Home Solutions



▶ Application Scenarios – Smart Switches



▶ Smart Lighting Solutions



Intelligent PLC Control Box



Wireless Lighting Control Box



LED Drivers

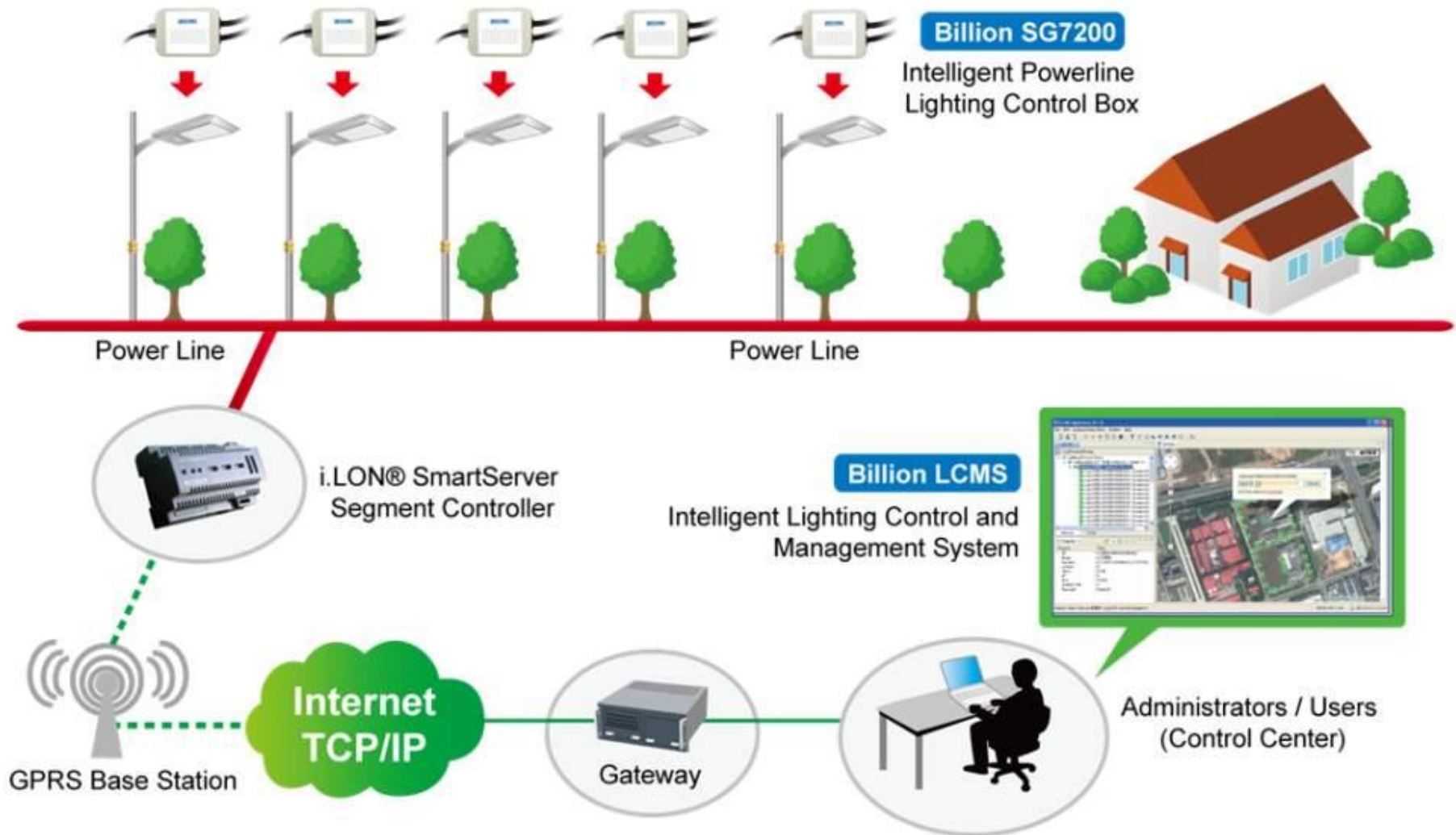


LED Light Head



LCMS System

Smart Lighting NPLC System Architecture



▶ Key Components of Billion LCMS

i.LON[®] SmartServer Segment Controller

- Standards-based advanced bridge to IP networks
- Segment controller



Extremely reliable power line control box

- Standards-based power line signaling
- Certified with LonMark outdoor luminaries controller profile
- Uses existing city electricity wires for power and communications

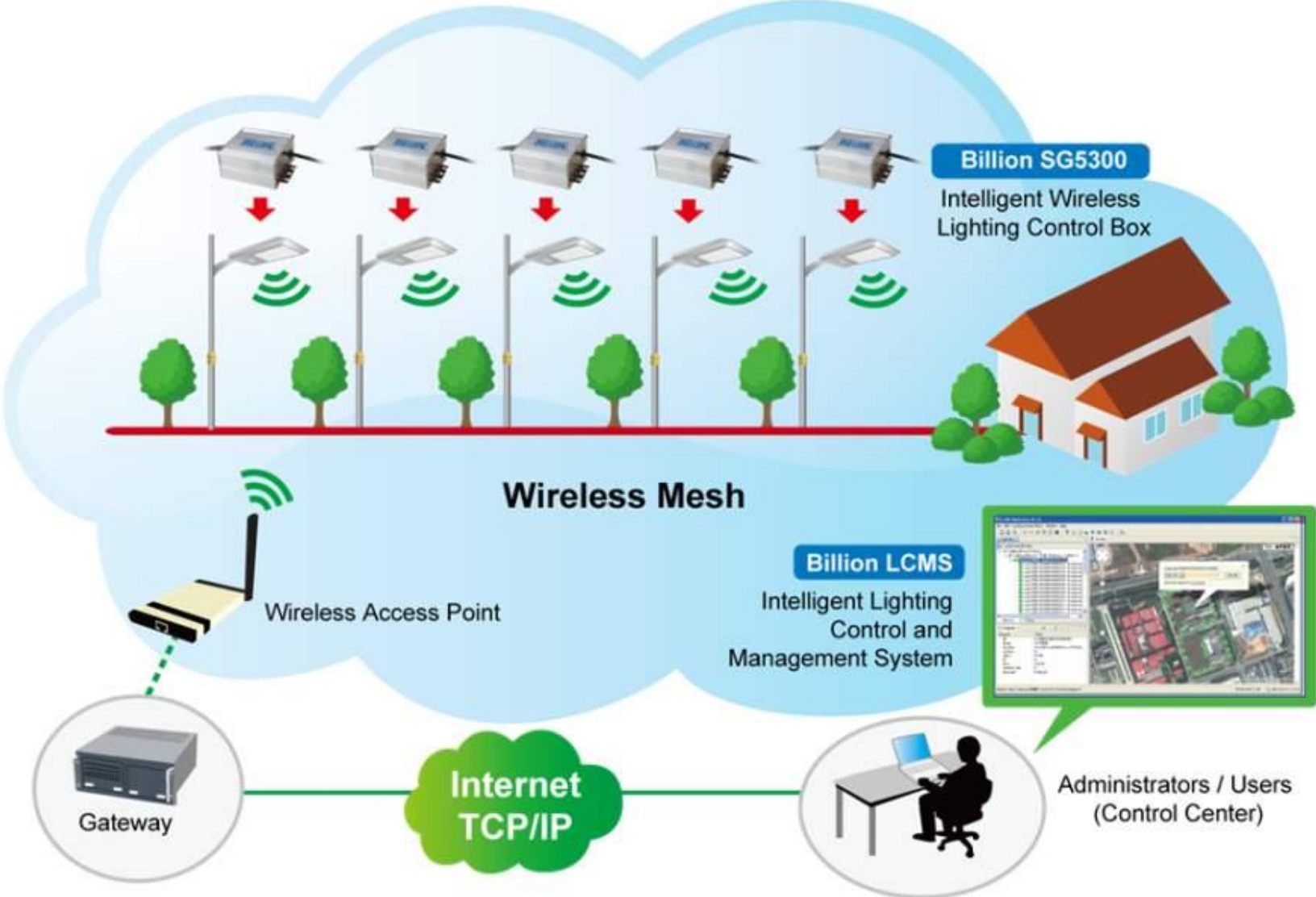


LCMS Software

- Real monitoring and control
- Maintenance and Energy management



Smart Lighting Wireless System Architecture



▶ Billion LED Drivers for Light Heads

Billion also offers a series of customized LED drivers with control / communication modules.



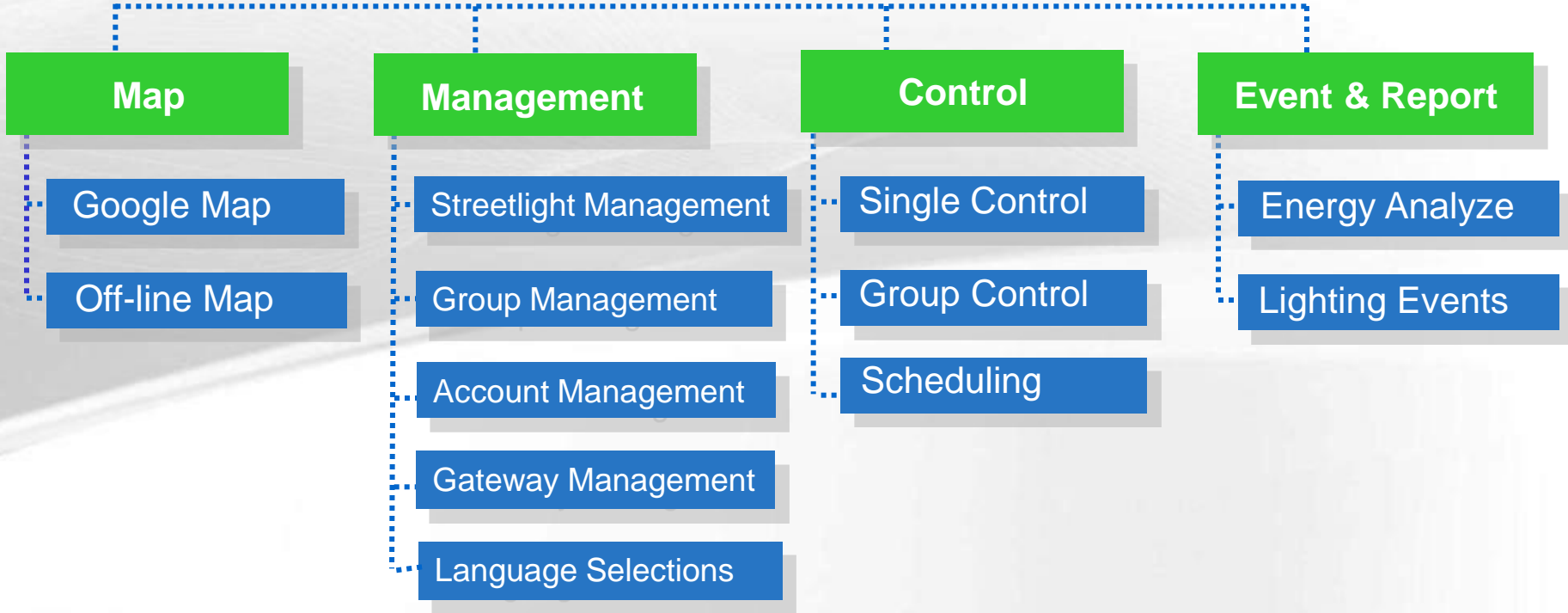
Billion LCMS solutions provide reliable LED light heads for customer selection.



Billion LCMS Software Functions

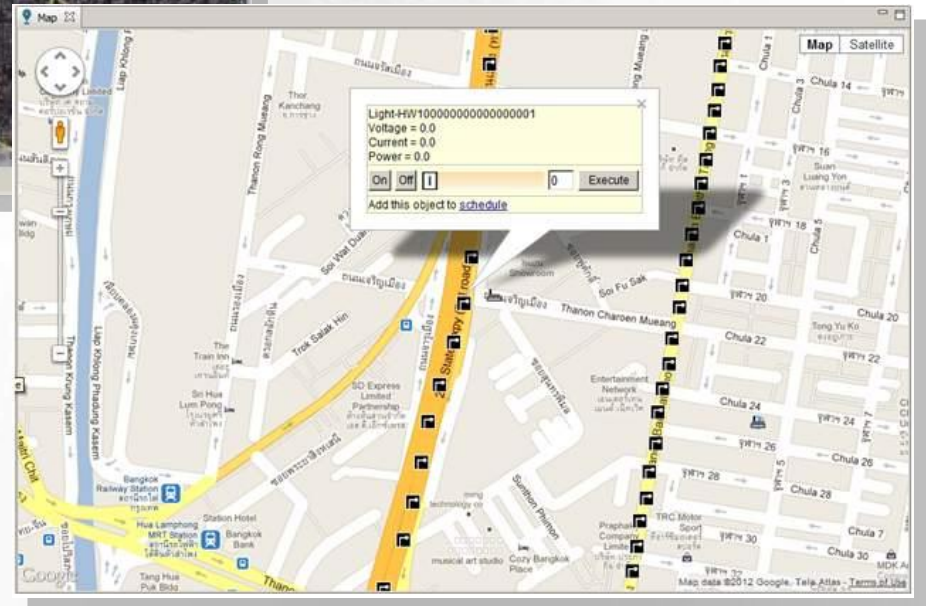
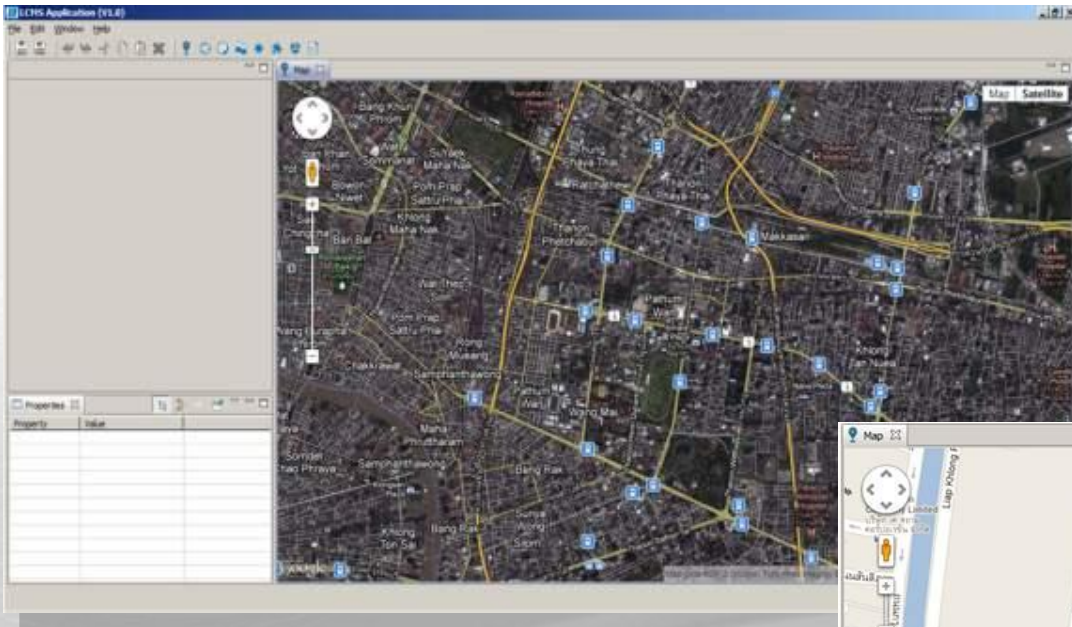


LCMS



Billion LCMS Operating Screenshots

- Google Map based application



- Just click and pop-up the menu for operation

▶ Streetlight Trial Project – China

China, Yangzhou

Quantity: 16 PCS

System: Wireless



▶ Streetlight Trial Project – China

China, Dongguan



Quantity: 39 PCS

System: Wireless & PLC





Contact Information

Mark Chang

Sales Director

Billion Electric Co., Ltd.

8F., No.192, Sec. 2, Zhongxing Rd., Xindian Dist.,
New Taipei City 231, Taiwan (R.O.C.)

Tel: +886-2-2914-5665 Ext. 309

Fax: +886-2-2918-2895

Email: markchang@billion.com.tw

Website: www.billion.com ; www.smartgrid.com.tw

Thank You!

